

fullstop[®]
SECURITY

NEMESIS

Model. FPC100

Wheel Clamp



**PLEASE READ THIS
MANUAL BEFORE
FIRST USE.**

**TIME INVESTED IN
CORRECT FITMENT
IS REPAID IN THE
LEVEL OF SECURITY
THAT IS ACHIEVED.**

User Manual

Rev.F 03-12

by

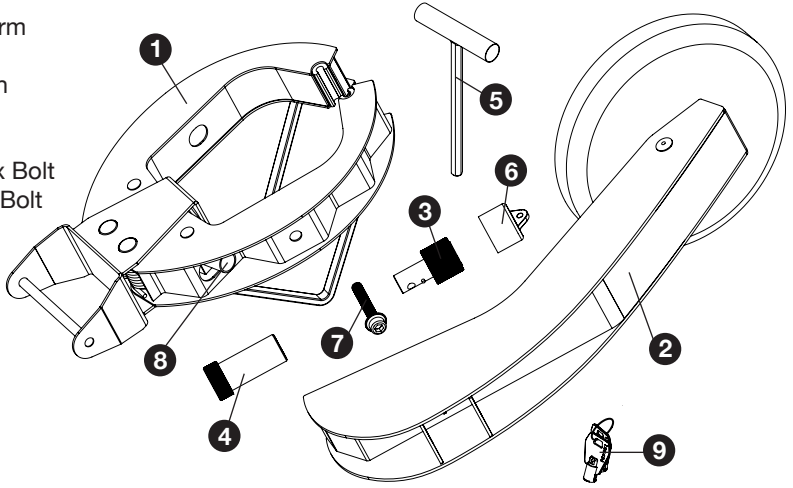


purpleline[®]

design...innovate...improve

Parts Identification

1. 'Jaws' Section
2. Wheel Hub Cover Arm
3. Male Lock Portion
4. Female Lock Portion
5. Hex Tool
6. Lock Cap
7. Wheel Hub Arm Hex Bolt
8. 'Jaws' Section Hex Bolt
9. Key (x2)



Always fit the supplied locking wheel nut & use in accordance to the supplied instructions.

Installation



A. Using the hex tool (5), unscrew the hinge bolt (8) anti-clockwise to open the 'jaws' (1).



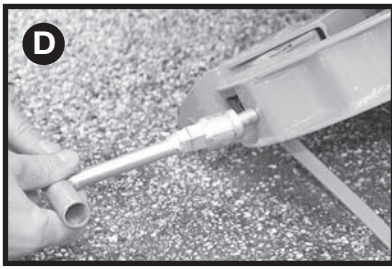
B. Check that the 'jaws' open enough to fit around the tyre and then fit the 'jaw' section around the wheel.

NOTE: The tips of the 'jaws' should be fitted into the wheel as far as possible. A little experimentation will be required to ensure a secure fit for your application.



C. Once the optimum jaw position has been established, the jaws need to be closed by using the hex tool to turn the hinge bolt clockwise. Use the hex tool to achieve a secure fixing.

TIP: When fitting to alloy wheels it may be prudent to use sort form of padding to protect the wheel from being scratched.



D. If necessary, unscrew (by turning anti-clockwise) the Wheel Hub Arm Hex Bolt (7). Do not fully remove.



E. The Wheel Hub Cover Arm (2) has a 'key hole' slot that fits over the hex bolt.



F. Feed the arm over the hex bolt.

Note: With certain wheels it is sometimes easier to unscrew the hex bolt from the 'jaw' section, locate through the 'key hole' aperture (see 1a) in the arm and then offer up the arm to locate the end of the hex bolt into the thread.



G. Slide the arm into the slot.



H. Hold the arm in position. The round wheel cover has a slide and tilt mechanism and should be adjusted to be central to the face of the wheel as much as possible. On larger wheels where central location is not possible, it must be ensured that at least one of the wheel nuts is covered.



I. Once in position, tighten the Wheel Hub Arm Hex Bolt (7) by turning clockwise until sufficiently tight.



J. Insert the Female Lock Portion (4) into the apertures of the lock cradle on the wheel cover arm. Insert the Male Lock Portion (3) into the female lock portion and secure with the key (9).



Note: The male portion has a notch that locates into a recess on the female portion.



K. Remove the key and your wheel clamp is now fitted. Two keys are provided. Please store your keys in a safe place and remember to return your fully completed registration card. Your key number is located on both of the keys supplied and will be required in order to purchase replacement keys.



Disclaimer

If used properly, your FullStop® product will be an effective deterrent. However, nothing can stop the efforts of the most determined thief, and to this end no liability is accepted for any loss and/or damage caused by any illegal activity including theft or vandalism. Liability is also not accepted for any loss and/or damage arising from misuse, unauthorised repair or alteration and failure to follow the user guide directions. No form of consequential loss what so ever will be accepted.



© Copyright 2012. Purple Line Limited.

Web: www.purpleline.co.uk **E-mail:** admin@purpleline.co.uk **Tel:** 01473 601200

Photographs for illustration purposes only. Actual product may differ slightly.

Purple line Limited reserve the right to alter product specification without prior notice.